

MONTHLY MEMBERSHIP PROGRESS REPORT

District 26 M2

Results as of: 5/31/2025

GMT:

LOCATION MISSOURI

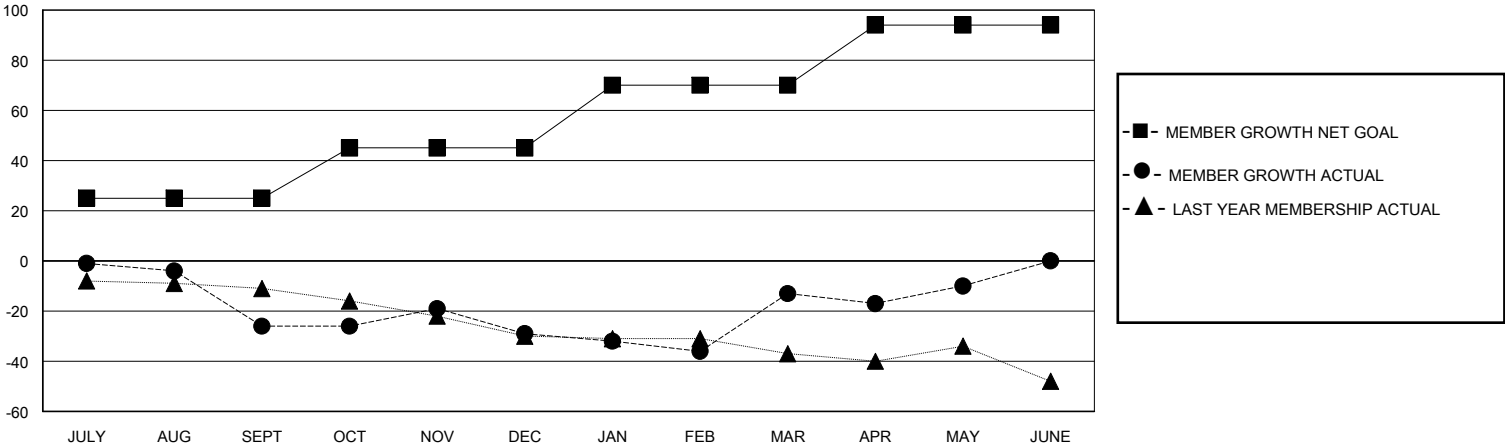
GMT CA

Clubs				Members			
RESULTS FOR 2024-2025				RESULTS FOR 2024-2025			
QUARTER	NEW CLUB GOAL	NEW CLUBS	DROPPED CLUBS	QUARTER	MEMBER GROWTH NET GOAL	MEMBER GROWTH ACTUAL	DROPPED MEMBERS ACTUAL (including transfers)
JULY/AUG/SEPT	0	0	0	JULY/AUG/SEPT	25	18	37
OCT/NOV/DEC	1	0	0	OCT/NOV/DEC	20	20	22
JAN/FEB/MAR	0	0	0	JAN/FEB/MAR	25	46	25
APR/MAY/JUNE	0	0	0	APR/MAY/JUNE	24	14	10

GOALS AND ACTUAL NEW CLUBS CUMULATIVE



GOALS AND ACTUAL MEMBERS CUMULATIVE



DROPPED CLUBS: 0	18 CLUBS OF 37 ADDED 1 OR MORE NEW MEMBERS	<u>GENDER DISTRIBUTION</u> MALE 784 (70.44%) FEMALE 329 (29.56%)
<u>DROPPED MEMBERS</u> DECEASED 25 CLUB CANCELLED 0 OTHER 62 TOTAL 87	<a href="#">CLICK HERE FOR CUMULATIVE MEMBERSHIP DATA</a>	TOTAL FAMILY UNIT MEMBERS 224 FAMILY MEMBERS PAYING HALF DUES 117